

PVII Horizontal Mega Menu Magic

The state of the art in Dreamweaver menu systems...



Create gorgeous and responsive mega menus in Dreamweaver with just a few clicks!

We hope you enjoy using this product as much as we did making it.

Al Sparber & Gerry Jacobsen PVII

Install the extension

Extension installer files come in 2 formats: MXP and ZXP. MXPs are supported by Extension Manager versions MX, MX2004, 8, CS3, CS4, CS5, CS5.5 and CS6. ZXP is supported by versions CS5.5 and higher. Version CC and higher have dropped support for the MXP format. To continue to support all Adobe customers, regardless of version, we include both the classic MXP and the new ZXP versions.

For version CS6 and older:

Look for the extension installer file **p7_MGM_114.mxp** in the root of the zip archive you downloaded. Double-click the files to install the extensions. Dreamweaver's Extension Manager will open and you will be prompted to complete the installation.

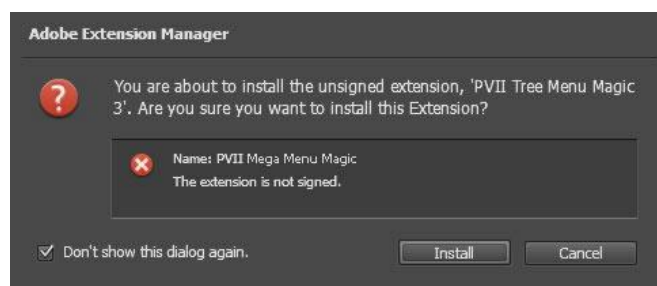
For version CS7 and higher:

Look for the extension installer file **p7_MGM_114.zxp** in the root of the zip archive you downloaded. Double-click the files to install the extensions. Dreamweaver's Extension Manager will open and you will be prompted to complete the installation.

About the ZXP Extension Installer Format

The ZXP format is identical to the tried and true MXP format developed by Macromedia with the chief difference being the file extension. It was adopted by Adobe to support its efforts to move third party extensions to the Adobe Exchange Store (for a fee)—a service we have no need for at this time.

When you install the ZXP version of Horizontal Mega Menu Magic, you might see this alert box, **which is totally harmless**, despite its looks.



Simply click the Install button and your extension will be installed without issue.

The purpose of a digital signature is primarily to protect the software developer's interest, ensuring that no one has altered the file from its original state. When you buy directly from the developer, in this case PVII, this is not an issue. Adobe's process to create a digital signature file requires installing third-party software that fails to meet our quality standards at this time. Even if we were able to use Adobe's software, the signature is only activated by going through Adobe's Exchange and sharing revenue with Adobe—which we have no need to do.

Work in a defined Dreamweaver site

Before you begin, make sure you are working inside a defined Dreamweaver web site. This is necessary so that Dreamweaver knows how to link required assets. If you are new to Dreamweaver or need to learn how to define a web site, follow these simple steps:

Choose Site > New Site

Specify local site location

The Site category of the Site Setup dialog box is the only one you need to fill out to begin working on your Dreamweaver site. This category lets you specify the local folder where you'll store all of your site files. When you're ready, you can fill out the other categories in the **Site Setup dialog box**, including the Servers category, where you can specify a remote folder on your remote server.

Site Name

The name that appears in the Files panel and in the Manage Sites dialog box; it does not appear in the browser.

Local Site Folder

The name of the folder on your local disk where you store site files, templates, and library items. Create a folder on your hard disk or click the folder icon to browse to the folder. When Dreamweaver resolves site root-relative links, it does so relative to this folder.

Overview

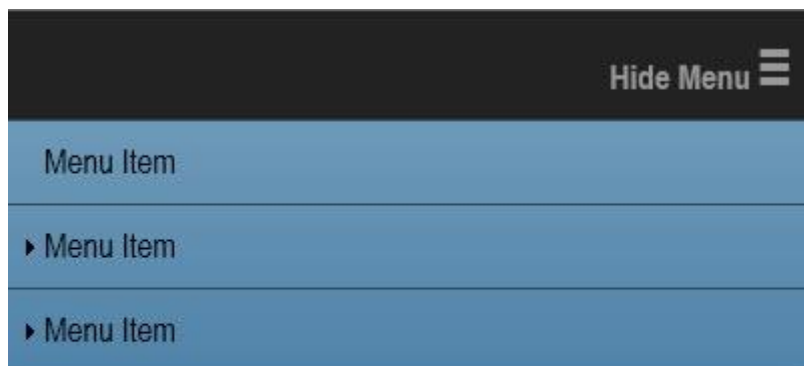
Horizontal Mega Menu Magic (MGM) is a tool that installs inside Dreamweaver with its own automated user interface (UI), which allows you to create and manage horizontal mega menus on your page.

Responsive and Mobile Ready

The MGM system is designed to automatically respond to the size of the browser window and the device being used.

Touch Device and Smart Phone Support

The Horizontal Mega Menu Magic system is designed to work perfectly on all touch enabled devices—including iPhone, iPad, Android, other smartphones and tablets. On smartphones, a toggle bar will appear above the menu with an icon that users can tap to hide or show the entire menu. The toggle bar uses an industry-standard 3-bar icon. You can optionally include **Show Menu/Hide Menu** text next to the icon.



Create or Modify

The user interface has 2 modes, **Create** and **Modify**, and will automatically open in the correct one based on your current insertion point in the document:

- If your insertion point is not within an existing MGM menu, the interface will open in *Create* mode.
- If your insertion point is inside an existing MGM menu. The interface will open in *Modify* mode.

Configurable Sub-Menu Widths

Sub-menus can be set to various widths from the interface.

Dreamweaver Template Support

The system is specifically designed to support Dreamweaver templates. You can insert one or more menus into a template (.dwt) master page at any time. You can also insert one or more menus into a template-based child page. The system will automatically detect the template and adjust to allow insertion into an editable region.

Current Link Marking and Auto Sub-Menu Opening

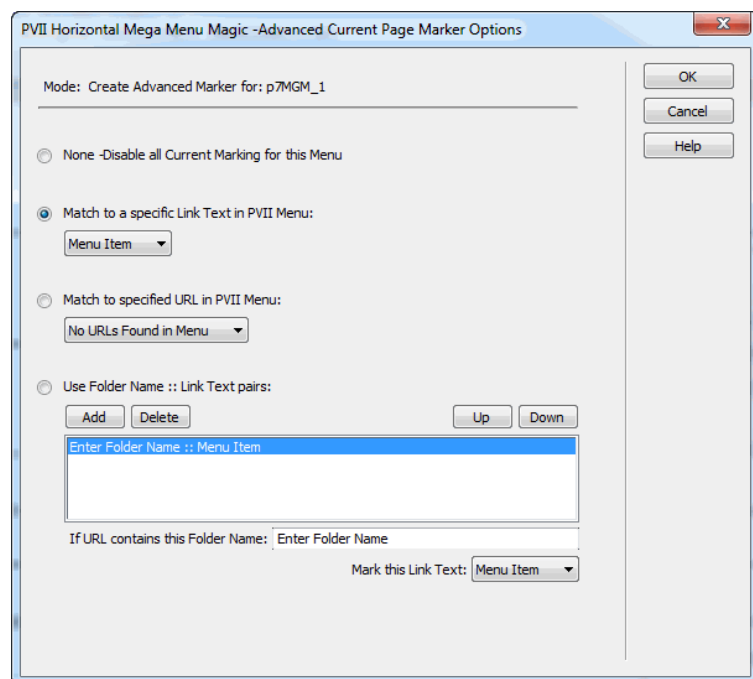
The system includes an optional feature that looks for links in the menu that match the current page address. When a match is found, the link is highlighted. The system assigns a special style class named **current_mark** to the matching link and its parent root item (if applicable). Current Marking can be turned on or off for each menu on your page.

Horizontal Mega Menu Magic also includes an Advanced Current Marker system that allows you to handle **exceptions**—so that even pages that *do not appear as links in the menu* can be highlighted.

Advanced Current Marking

Horizontal Mega Menu Magic also includes an Advanced Current Marker system that allows you to handle **exceptions**—so that even pages that *do not appear as links in the menu* can be highlighted. To access it, on a page that contains a menu, choose **Commands > Studio VII > Horizontal Mega Menu Magic > Advanced Current Marker Options**.

The Advanced Current Marker user interface will open.



Click the Help button to access the ACM help files.

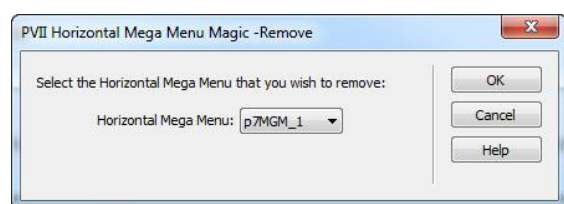
Image Support

The system supports using images for the menu items and automatically handles pre-loading, swapping, multiple state management and current marking. This automation requires that you follow the image file name convention. The system supports up to 3 different image states. If your default image is named **home.jpg**, then you would name your over image **home_over.jpg** and your open/current-mark image **home_down.jpg**. All images must be in the same folder. In the interface, you only need to assign the default image (home.jpg). The script will automatically find the other images.

Automated Removal

A handy Remove command is included that can be used to quickly and thoroughly remove any Horizontal Mega Menu Magic menu from your page. To access the Remove UI, choose:

Commands > Studio VII > Horizontal Mega Menu Magic > Remove Horizontal Mega Menu Magic



The interface will provide a listing of all of the Horizontal Mega Menu Magic menus on your page. The list will display the ID of each menu.

-From the listing, select the menu that you wish to remove. You can remove one menu at a time.

Tip: If you are unsure about which menu relates to which ID, click the Cancel button and switch to Code View. In Code View, locate all IDs that begin with P7MGM. The opening DIV tag for a Horizontal Mega Menu Magic menu looks like this: `<div id="P7MGM_1" class="P7MGM-01">`

What will be Removed


The system will completely remove the html markup for the selected menu from your page. If there are other Horizontal Mega Menu Magic menus on the page they will not be affected. The system will also remove the link to the relevant **CSS file** if no other menu on the page is using the same style theme.

If there are no remaining Horizontal Mega Menu Magic menus on your page, the system will also remove the link to the Mega Menu **JavaScript** file.

What will Not be Removed

The system will not remove the **P7mgm** folder, which contains the menu-related assets (images, JavaScript file, and CSS files). This ensures that you will not lose any assets you may have modified and any other pages that depend on those modified assets will continue to look and behave as expected.

Inserting a New Menu

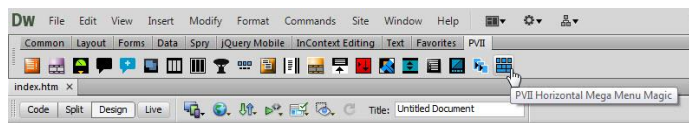
Horizontal Mega Menu Magic menus can be inserted anywhere on your page. Once you have established your insertion point, click the Mega Menu icon  to open the interface. Alternatively, you can choose **Insert > Studio VII > Horizontal Mega Menu Magic by PVII**. You can insert the menu into any area of your page. The menu width will automatically adapt to its location, even when placed inside flexible DIVs or table cells. You can insert as many individual menus as you like on your page. Each menu can be optioned independently to set different behaviors and features. Menus on a single page can share the same style theme or be set to separate style themes.

-Establish the insertion point for your new menu by clicking in the area of the page where you would like it to be created.

Note: The interface is sensitive to the insertion point. If your cursor is currently inside an existing Mega Menu component the Modify interface will open instead.

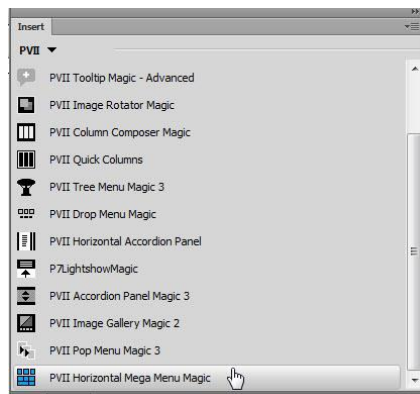
-Click the *Horizontal Mega Menu Magic* icon  in the PVII Section of Dreamweaver's Insert Bar or choose **Insert > Studio VII > Horizontal Mega Menu Magic by PVII**.

Classic Dreamweaver Insert Bar

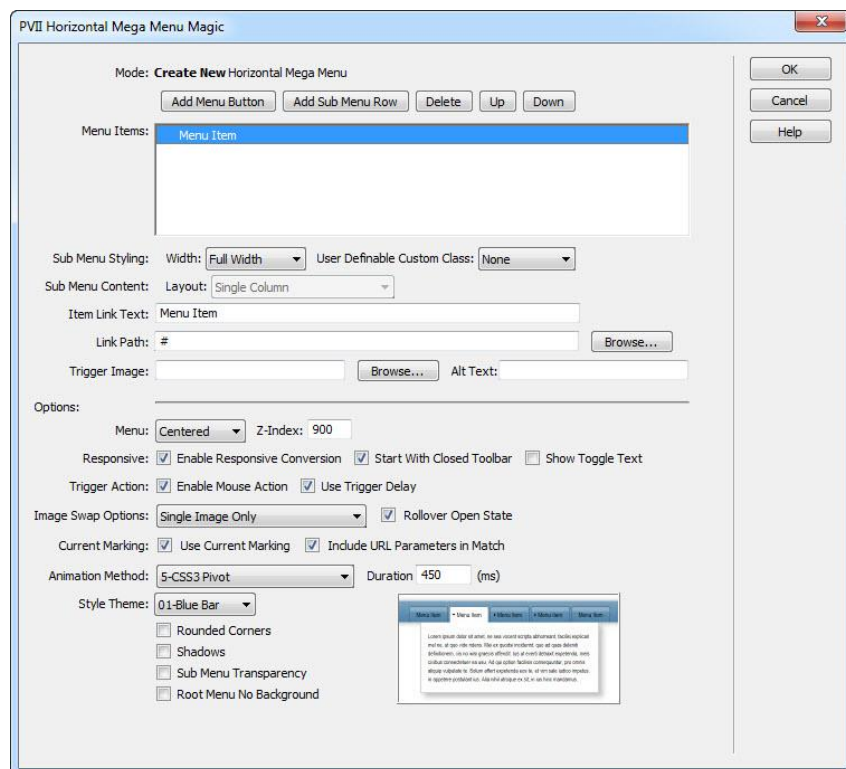


Note: Newer versions of Dreamweaver will only be able to display icons in shades of gray, rather than in color. If you are using the Creative Cloud version of Dreamweaver, this [Insert Panel Tutorial](#) might be of interest.

Dreamweaver Insert Panel



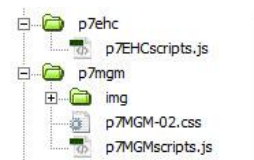
The Horizontal Mega Menu Magic user interface will open in the **Create** mode.



You can create more than one menu on your page. Add as many as you like.

Asset Folders

When you create a menu, the system creates an assets folder named **p7mgm** at the same level as the page that contains your menu. This folder will contain the MGM JavaScript file and the relevant menu style sheet(s), as well as an **img** sub-folder that contains arrow background images used by the CSS.



When you publish your site, make sure you upload the entire **p7mgm** folder.

Modifying an Existing Mega Menu

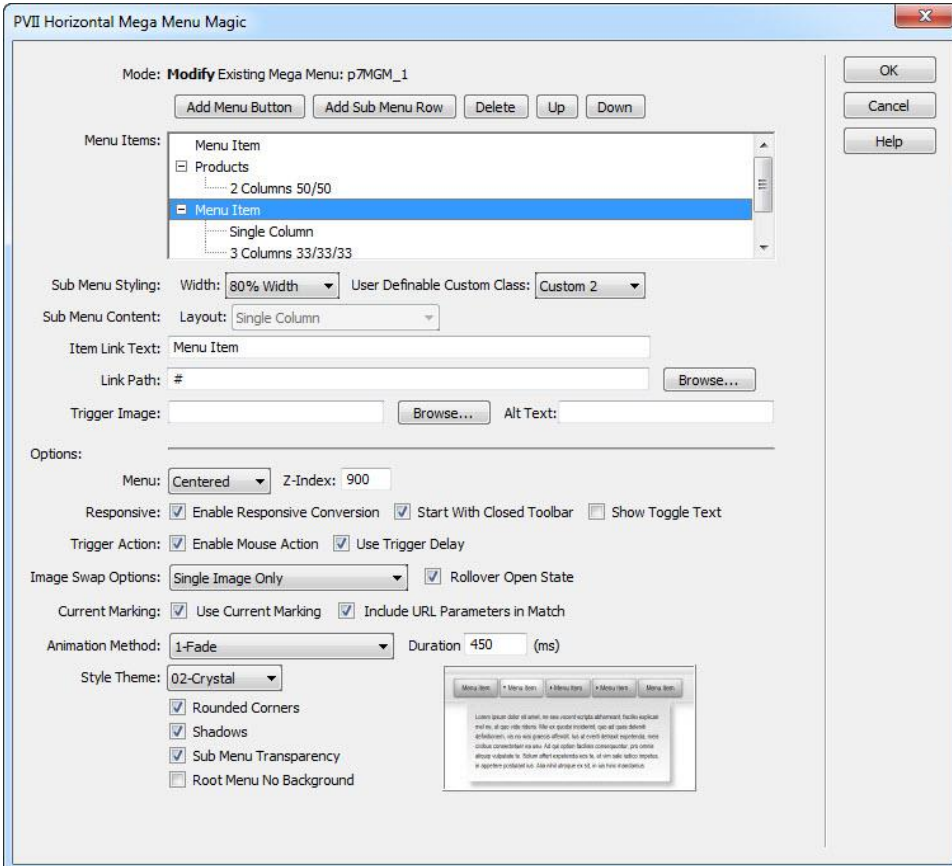
You can modify any of the existing Horizontal Mega Menu Magic menus on your page at any time.

-Click inside the menu that you wish to modify.

-Click the *Horizontal Mega Menu Magic* icon  in the PVII Section of Dreamweaver's Insert Bar or choose **Modify > Studio VII > Modify Horizontal Mega Menu Magic by PVII**

Note: If you use a Macintosh computer, Apple bugs will sometimes cause the Modify menu to be inactive (grayed out). If this happens to you, use the icon to launch the interface. You can also launch the interface from the Insert menu. The system will open the interface in the appropriate mode whether you use the Insert Menu, Insert Panel/Bar or the Modify menu.

The Horizontal Mega Menu Magic User Interface will open in the **Modify Existing Mega Menu Magic mode**.



PVII Horizontal Mega Menu Magic

Mode: **Modify** Existing Mega Menu: p7MGM_1

Menu Items:

- Menu Item
- Products
 - 2 Columns 50/50
- Menu Item**
 - Single Column
 - 3 Columns 33/33/33

Sub Menu Styling: Width: User Definable Custom Class:

Sub Menu Content: Layout:

Item Link Text:

Link Path:

Trigger Image: Alt Text:

Options:

Menu: Z-Index:

Responsive: ☒ Enable Responsive Conversion ☒ Start With Closed Toolbar ☐ Show Toggle Text

Trigger Action: ☒ Enable Mouse Action ☒ Use Trigger Delay

Image Swap Options: ☒ Rollover Open State

Current Marking: ☒ Use Current Marking ☒ Include URL Parameters in Match

Animation Method: Duration: (ms)

Style Theme:

☒ Rounded Corners
☒ Shadows
☒ Sub Menu Transparency
☐ Root Menu No Background

Managing the User Interface Items

Mode

Displays the current operational Mode for the user interface: either *Create* or *Modify*. When in *Modify* mode, the **id** of the menu being modified will also be displayed.

Menu Items

This box displays the text for each root menu item in the menu and the sub-menu content layout type for each row of the sub-menu panels. Select (click) the line you wish to act on.

Add Menu Button

Click the Add Menu button to add a new root menu link. This new item will be created immediately after the selected item, or at the end of the listing if a root menu item is not currently selected. The newly created menu item will initially appear with the default description: *Menu Item*, and the URL will simply be a hash (#) placeholder. Change these to suit your needs. The **Image Path** box is always blank by default.

Add Sub-Menu Row

Click the Add Sub button to create a **new sub-menu** row for the selected root link item or to add another row to the existing sub-menu row. A new sub-menu row will appear directly beneath the selected sub-menu row or as the last row if the root menu item is currently selected. The newly created sub-menu row will initially appear with the text corresponding to the currently selected **Sub-Menu Content Layout**. The Link Text, Path, Trigger Image, Alt Text and Browse buttons will be disabled (grayed out) since these entry boxes do not pertain to the sub-menu panels.

Note: The Add Sub-Menu Row button will be disabled (grayed out) when the sub menu Content Layout option is set to Classic Drop Down" since this option allows for only one sub menu row.

Delete

Click the Delete button to remove the selected menu item or the selected sub-menu row. If the menu item contains one or more sub-menu rows the system will completely remove the selected menu item *and all of its sub-menu rows*.

Note: The interface requires at least one item to be in the menu list at all times. The system will not allow you to delete a menu item if it is the only remaining one.

Up

Click the Up button to move the selected menu item up in the Menu Items list. The menu item, *and all of its sub-menu rows*, will be moved up one position each time the button is clicked. Sub menu rows can only be moved within their respective parent root menu item.

Down

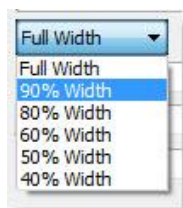
Click the Down button to move the selected menu item down in the Menu List. The menu item, *and all of its sub-menu items*, will be moved down one position each time the button is clicked. Sub menu rows can only be moved within their respective parent root menu item.

Sub Menu Styling

Width

Each sub-menu can be set to a different width to perfectly compliment the intended content. The width options are specified in percentages in order to maintain the responsive functionality of the system. The choices are based on the full rendered width of the root menu.

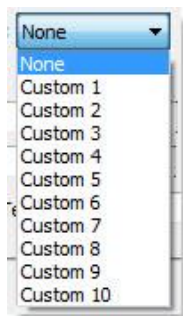
Choose from one of these width options:



Note: The width setting is ignored when the **Sub Menu Content Layout** option is set to **Classic Drop Down**, which sets its width directly from the style sheet using the `.mgm-mega-menu.mgm-classic` rule.

User Definable Custom Class

The MGM style sheets are pre-supplied with 10 different user-defined **custom** style classes that can be assigned to a sub-menu. This allows for creative customization treatment for any or all of the sub-menus. Choose **None** if you are not going to use the custom style classes. The Custom classes are blank rules in your MGM CSS file ready for you to define.

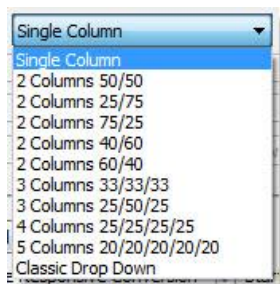


Sub Menu Content

Layout

The MGM system provides a fully featured structural layout system (Grid) for building your sub-menus, in row/column format. You can add as many rows as you like and each row can contain a mix of different columns. This allows you to tailor the structure of each sub-menu to perfectly suit your content and design requirements.

When adding a new row you can choose from these formats:



Choose the **Single Column** option if you just want an empty full panel to work with.

Note: This option is available **ONLY** for newly created panels. it will unavailable (grayed out) for existing panels. If you want to change the format of an existing panel, create a new one below it. Then copy the content from the existing one into the new one. When you are done, open the the interface again and delete the old panel.

Item Link Text

The Menu Link Text box will always display the text of the currently selected line in the *Menu Items* list. Enter or edit the text that you wish to display for this menu link.

Note: If an image has been assigned, this box will be disabled (grayed out) and contain the file name of the assigned image. Removing the Image Path will re-enable the box for text entry.

Link Path/ Browse...

Enter the path to the linked page for this menu item or use the Browse button to open the *Select File to Link* dialog box. The system will automatically supply a "#" link placeholder when new menu items are created, which you can change to an actual page link before publishing.

Image Path / Browse...

Note: The Image Path box is only used if you are using images for your menu items. For text-based menus this box should be left empty.

Enter the path to your image or use the **Browse** button to open a *Select Image Source* dialog box. You can change the image at any time by selecting the menu item in the Menu Items list and clicking the "**Browse...**" button. Valid image types are limited to the .gif, .jpg, and .png file types.

The image you select must always be the **default state image**. The system will automatically handle image pre-loading. Images for additional states (over, and down), depending on the **Image Swap Option** you select, must be stored in the same folder as your default image. The system will automatically find them.

Default state image file names can be any valid name. You must, however, follow a naming convention for the additional state images. If your default image for a link is home.jpg, your image file names would follow this convention:

- home.jpg
- home_over.jpg
- home_down.jpg

Image Alt Text

Enter a description for the related image in the **Alt Text** box. If the image is a picture of hats, then *Hats* would be a good choice for the text to use.

Options

These settings are applied to the MGM menu you are currently editing. Other menus on the same page will not be affected and will retain their unique options.

Menu

Menu Alignment

Menus can be aligned in one of three ways. Select one of these methods:

- **Left:** All root menu items will be left-aligned within the containing page element
- **Centered:** All root menu items will be centered within the containing page element
- **Right:** All root menu items will be right-aligned within the containing page element

Z-Index

This option allows you to set a specific z-index for the current menu. The z-index specifies the stacking order of the menu versus other positioned elements on your page. An element with a higher z-index value will always appear in front of an element with a lower one. Set this number to a very large number if you want the menu to appear above all other elements on the page. The default value is set to 900. When two or more menus exist on the same page, you can set z-index values for each to achieve the stacking order you desire.

Responsive

Enable Responsive Conversion

By default, the menu always adapts to the width of the element in which it is placed. If your site is a responsive design, and you enable Responsive Conversion, your menu will display a toggle icon above it when viewed on a smartphone—or in a conventional browser window when its width is less than 700 pixels. The toggle icon permits users to completely hide the menu so that they can view more of the page content. You should disable this option if your site is not a responsive design.

Start With Closed Toolbar State

Set this option if you want the default state of your menu, when viewed on a smartphone, to be closed. Users will be able to control the visibility of the menu by clicking the toggle icon or text links.

Show Toggle Text

Enable this option to also show a text label, "Show Menu" or "Hide Menu" next to the toggle icon in the toolbar. The actual text content for these labels can be modified in the Smartphone Menu Media Query section of the MGM style sheet.

Trigger Action

Enable Mouse Over Action

This option, which is on by default, allows mouse-over activation of the menu triggers. Hovering over a menu trigger will open its sub-menu. Moving the mouse away from the trigger will close the sub-menu. The click behavior to open or close the sub-menu will still remain enabled to support keyboard and mobile device users.

Use Trigger Delay

The MGM system includes a built-in action delay to allow for diagonal mouse movements without accidentally closing a sub-menu. This feature makes using the menu much easier and should normally be left activated. Un-check the box to disable the delay.

Image Swap Options

The system supports using images for links and is designed to automatically handle pre-loading, swapping, maintaining states, and assigning a current-marker. This automation requires that you follow the image file name convention. The system supports up to 3 different image states. Select the Swap Option that you would like to use:

- **Single Image Only** - Choose this option if you are using just a single image and do not want any swap actions.
- **Normal and Over** - Choose this option if you are using two images: one normal image and one for the over (hover) state. The over image will also be used for the open (down) and current-mark states.
- **Normal, Over and Open Images** - Choose this option if you are using three images: one normal image, one for the over (hover) state, and one for the open (down) state. The open state image will be used for the current-mark state.

Note: Be sure to choose the option carefully to match the number of image states you are using. The system will pre-load the various state images based on this selection.

Rollover Open State

This controls the swap action when a trigger link is in its open state. The system will swap to the over image if the trigger link is in the open state and you have a 3-state swap option set. Uncheck the box if you want to disable this swap action.

Current Marking

These settings control the operation of the included automatic Current Marking system.

Use Current Marking

This box is checked by default to enable automatic current marking (highlighting) of links in your MGM menu. The system looks for links in the menu that match the current page address. When a matching link is found, it's highlighted.

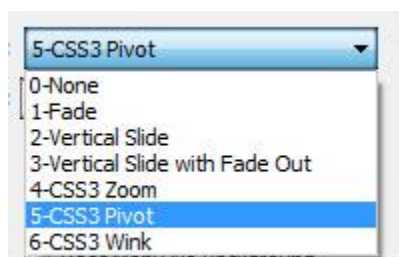
MGM also includes an **Advanced Current Marker** system to allow you to handle **exceptions**—so that even pages that *do not appear as links in the menu* can have a specified link Current Marked.

Include URL Parameters in Match

This option controls whether the automatic current-marking feature will include any URL parameters in the page address when looking for a matching link in the menu. Check this box if you wish to have your URL parameters included in the match criteria.

Animation Method

The MGM system allows you to choose from 6 animation methods—including None.



Duration

This option allows you to control the animation speed. *Duration* defines the total amount of time that the animation will run, in milliseconds, regardless of a content panel's dimensions. The default 450 is fine in most cases. Lower the *Duration* setting and the animation will be faster. Raise the setting to make the animation slower.

Style Theme

MGM comes with pre-defined CSS style themes. Choose a theme that best approximates the look you desire. This can act as a starting point from which you can later make edits to the style sheet to fully customize your menu(s). You can change to a different style theme at any time without affecting the content of your menus.

A preview of the selected theme is displayed to the right of the *Style Theme* select list. This Preview will change whenever you select a different theme.

Rounded Corners

This option allows you to add rounded corners to the menu structure. The application of rounded corners will be based on the *Style Theme* you have chosen.

Shadows

This option allows you to add shadows to the menu. The manner in which the shadows are assigned is based on the *Style Theme* you have chosen.

Sub-Menu Transparency

This option allows you to apply transparency to the sub-menus.

Root Menu No Background

This option allows you to alter the selected Style Theme by removing the background treatment for the root menu items and its container. This allows the root menu to become transparent and let the color of the underlying page elements show through so the menu instantly picks up the styling treatment of your page.

Command Buttons

OK

When you are done setting your desired options, click the **OK** button to build the menu. The system will verify your selections and alert you to any problems that need your attention. If there are no problems, the interface will close and a menu will be added to your page or updated—depending on whether you are in *Create mode* or *Modify mode*.

Tip: To make further changes, click inside a menu and then open the Horizontal Mega Menu Magic interface to begin your modifications.

Cancel

Click the *Cancel* button to completely abort the current operation. This will close the interface and no changes will be made to your page.

Help

Click the *Help* button to open the associated Help File in your browser. This page can remain open for easy reference while you continue working in the MGM interface.

Menu Styling

Please see the [MGM Style Guide](#) for CSS tips and information on DMM.

Support and Contact info

PVII quality does not end with your purchase - it continues with the best customer support in the business.

PVII Knowledge Base

The PVII Knowledge Base is an online PVII application allowing you to access dozens of Tech Notes, tips, and techniques relating to our products, as well as to general web development issues..

[Open the Knowledge Base](#)

PVII Communities

PVII maintains separate and distinct Web Forum and Newsgroup communities. We do this to ensure you always have access via your preferred medium and device.

1. The PVII Web Forums

The PVII Web Forum is a modern browser-based community, accessible to both desktop and mobile devices and requires no additional software or plugins.

[Visit The PVII Web Forum community now...](#)

2. PVII Newsgroup forums

The Project VII Newsgroup is available via private and secure NNTP servers. In order to subscribe to a newsgroup you must have a newsgroup-capable client installed such as:

1. Mozilla Thunderbird
2. Windows Live Mail
3. Windows Mail/Outlook Express
4. Opera Mail
5. Entourage

Server: **forums.projectseven.com**

Note: PVII newsgroups are private and have nothing to do with usenet feeds that may be provided by your ISP. That is, you will not find our newsgroups in a list of newsgroups distributed by your internet service provider. You must set up our news server as a new account.

Before you Contact us

Before making a support inquiry, please be certain to have read the documentation that came with your product. Please include your Dreamweaver version, as well as your computer operating system type in all support correspondence.

E-Mail:

support@projectseven.com

Phones:

330-650-3675

336-374-4611

Phone hours are 9:00am - 5:00pm Eastern Time U.S.

Snail mail

Project Seven Development
339 Cristi Lane
Dobson, NC 27017